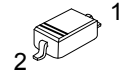


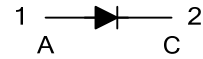
■ FEATURES

- * Low reverse current
- * Surface mount package ideally suited for automatic insertion
- * Fast switching speed
- * For general purpose switching applications

SYMBOL



SOD-123



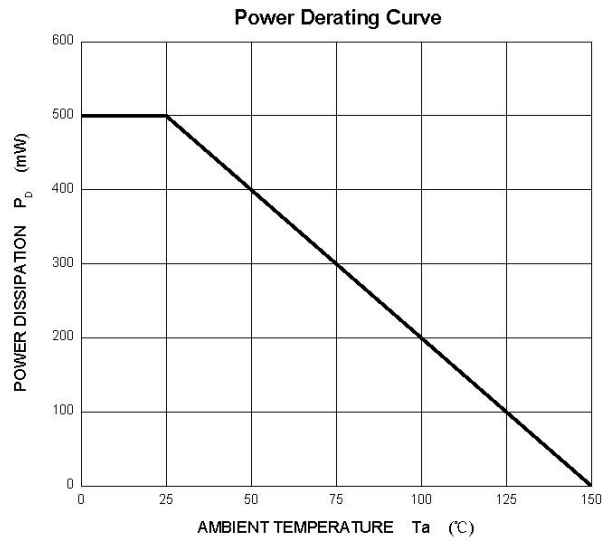
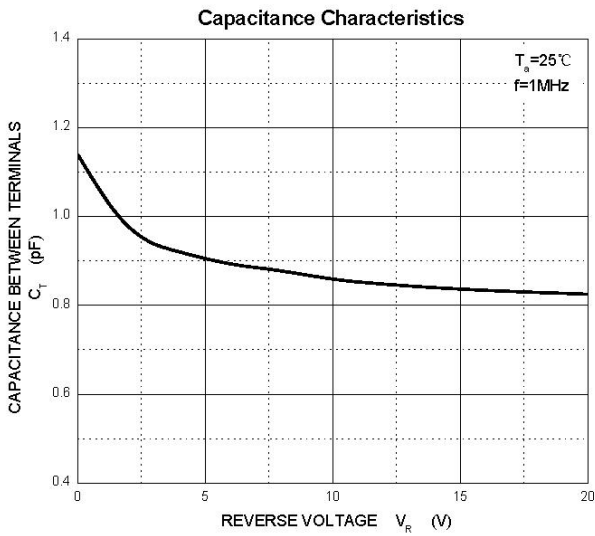
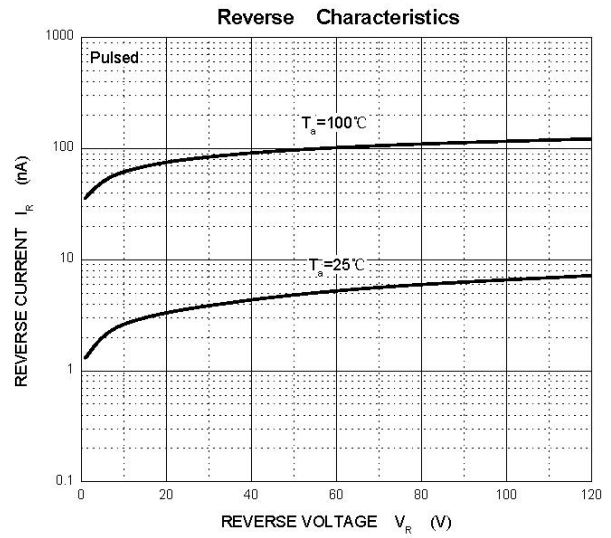
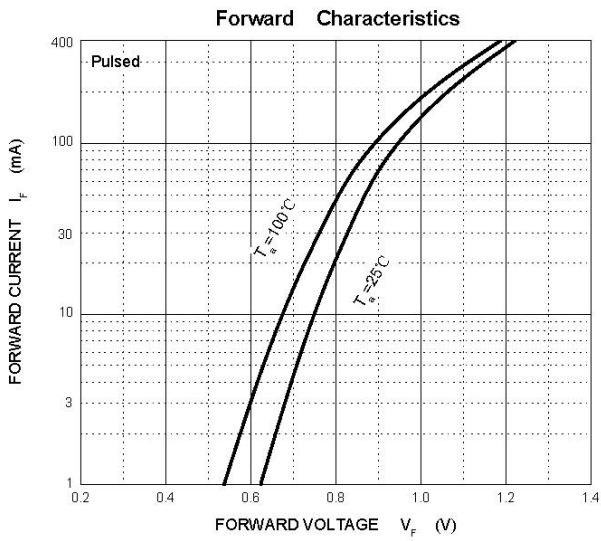
■ ABSOLUTE MAXIMUM RATINGS (T_A=25°C, unless otherwise specified)

PARAMETER	SYMBOL	VALUE	UNIT
Non-repetitive peak reverse voltage	V _{RM}	250	V
Peak repetitive reverse voltage	V _{RRM}	200	V
Working peak reverse voltage	V _{RWM}	200	V
RMS reverse voltage	V _{R(RMS)}	141	V
Average rectified output current	I _O	200	mA
Non-repetitive peak forward surge current @ t = 8.3ms	I _{FSM}	2.0	A
Power dissipation	P _D	500	mW
Thermal resistance from junction to ambient	R _{θJA}	250	°C/W
Operating junction and storage temperature range	T _j , T _{stg}	-55 ~ 150	°C

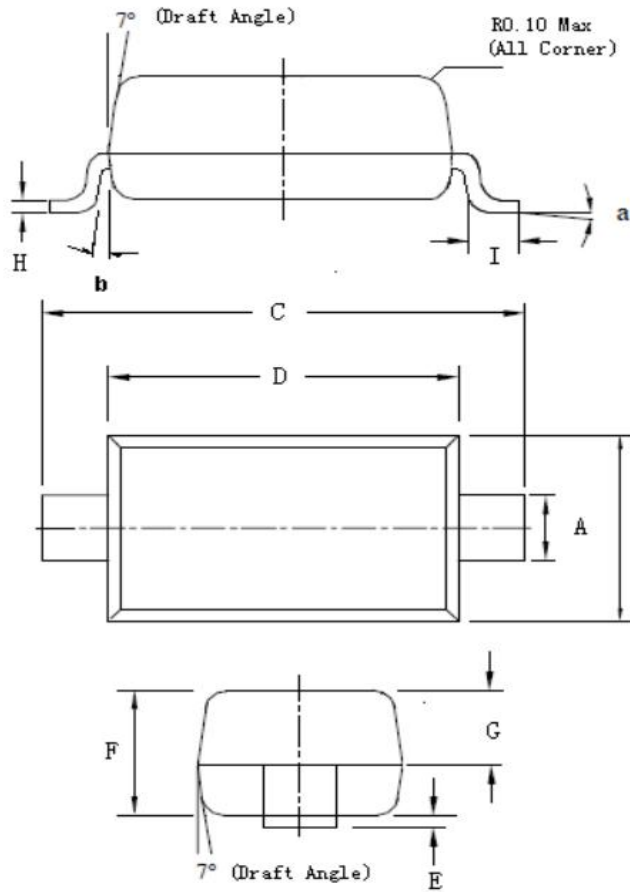
■ ELECTRICAL CHARACTERISTICS (T_A=25°C, unless otherwise specified)

PARAMETER	SYMBOL	TEST CONDITION	MIN	TYP	MAX	UNIT
Forward voltage	V _{F1}	I _F = 100mA	-	-	1	V
	V _{F2}	I _F = 200mA	-	-	1.25	V
Reverse current	I _R	V _R = 200V	-	-	0.1	μA
Capacitance between terminals	C _T	V _R = 0V, f = 1MHz	-	-	5	pF
Reverse recovery time	t _{rr}	I _F = I _R = 30mA, I _{rr} = 3mA, R _L = 100Ω	-	-	50	ns

■ TYPICAL CHARACTERISTICS



SOD123 Package Mechanical Data



Symbol	Dim in mm		
	Min	Nom	Max
A	0.520	0.550	0.570
B	1.400	1.550	1.700
C	3.550	3.650	3.850
D	2.550	2.650	2.850
E	0.000	0.050	0.100
F	1.050	1.100	1.150
G	0.620	0.650	0.670
H	0.090	0.100	0.110
I	0.250	0.350	0.450
a	0°	-	6°
b	0.4°	-	0.8°

Mold Surface roughness < 4um